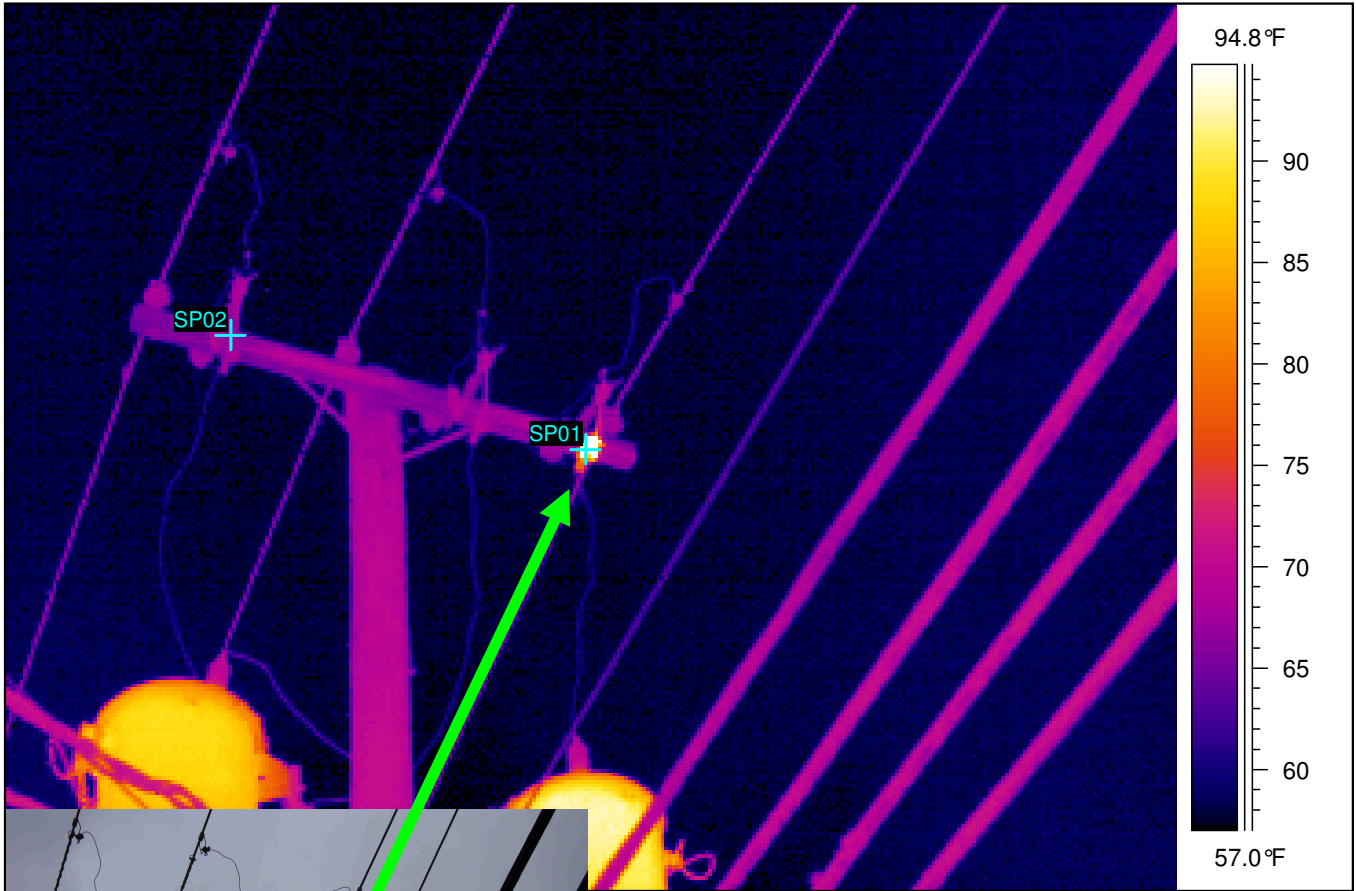


Utility Pole



Correction notes:

IR Text Comment	Value
Location	Utility Pole
Equipment	480 Volt Service

Spot 1	220.8°F	Spot 2	66.2°F	Rise	154.57°F
--------	---------	--------	--------	------	----------

Comments: East phase shows extreme temperature rise on the bottom of the cutout mechanism. Advise utility co. ASAP.